



JuCaiHuiXin

*ONE OF LARGEST SOLAR BRACKET MANUFACTURER IN CHINA*

# **SOLAR SOLUTION FOR ROOFTOP**

TIANJIN JU CAI HUI XIN INDUSTRY AND TRADE CO., LTD

# Contents

<b>Our Company</b> .....	1
<b>Tile Roof Mount System</b>	
Roman Tile Roof Mount.....	2
Adjustable Tile Roof Mount .....	3
Flat Tile Roof Mount.....	4
Composition Shingle Roof Mount.....	5
<b>Metal Roof Mount System</b>	
Trapezoidal Metal Roof Clamps.....	6
Universal Metal Roof Clamp.....	8
L Foot Mount.....	10
Hanger Bolt Mount.....	11
Standing Seam Roof Clamps.....	12
<b>Flat Roof Mount System</b>	
Flat Roof Mount System I.....	14
Flat Roof Mount System II.....	15
Flat Roof Mount System III (East-West).....	16
Flat Roof Mount System IV (Two Rows).....	17
Flat Roof Mount System V.....	18
Flat Roof Mount System VI.....	19
Flat Roof Mount System VII.....	20
<b>Adjustable Tilt Roof Mount System</b> .....	22
<b>Roof Componets</b>	
Rail & Splice for roof.....	23
Mid Clamp & End Clamp.....	25
<b>Grounding System</b> .....	26
<b>Projects Reference</b> .....	27



## Company Profile

As one of the largest solar bracket manufacturer in China, Tianjin Jucai Huixin Industry And Trade Co., Ltd. export started in 2020 with a total factory area of more than 3 0,000 square meters and an annual production capacity of 450,000 tons.

We specialize in delivering reliable and cost-efficient solar PV mounting system solutions for a widerange of projects worldwide. Our expertise extends to residential, agriculture, industrial, government, commercial, and utility-scale solar design & OEM manufacturing.

## Management Concept

We have consistently emphasized a standardized and internationalized management approach since its inception. From the outset, we have actively embraced and rigorously implemented internationally recognized quality management systems, such as ISO9001, ISO14001, ISO45001, ROHS & CE.

These systems are applied comprehensively across all phases of our operations, including research and development, manufacturing, marketing, and post-sales services.

## Research and Development

At our core, we prioritize professionalism and innovation in our product research and development. By upholding professional standards, we offer effective guarantees to our customers, while our dedication to innovation enables us to create additional value.

## Our Factory Photos



## Tile Roof Mount



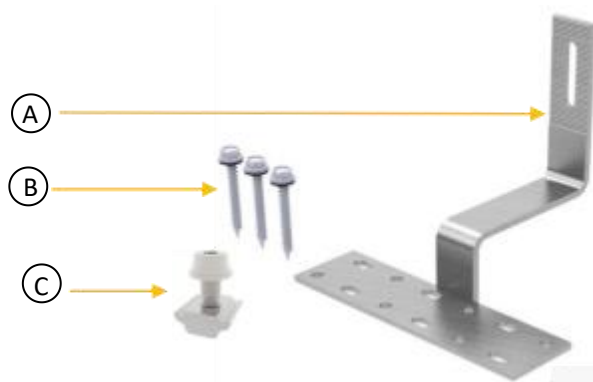
Tile Roof Mount, Tile Hook, different options offered to install on top of roof and side of roof rafter

### Features

1. Accommodate different types of PV solar panels
2. Custom-made tile hooks based on tile specifications
3. Made of SUS 304
4. Easy and fast installation
5. No need to drill into tile
6. Slotted for easy adjustment

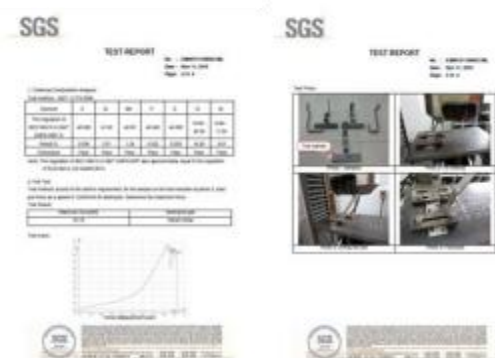
### Component List

Component	Quantity
A. Stainless Steel 304 hook	1
B. 6.3x65mm woodscrew & EPDM washer	3
C. M8x25mm SUS 304 bolt & rail nut & SUS washer	1



YZ-SS-RTH-01

### SGS TEST REPORT

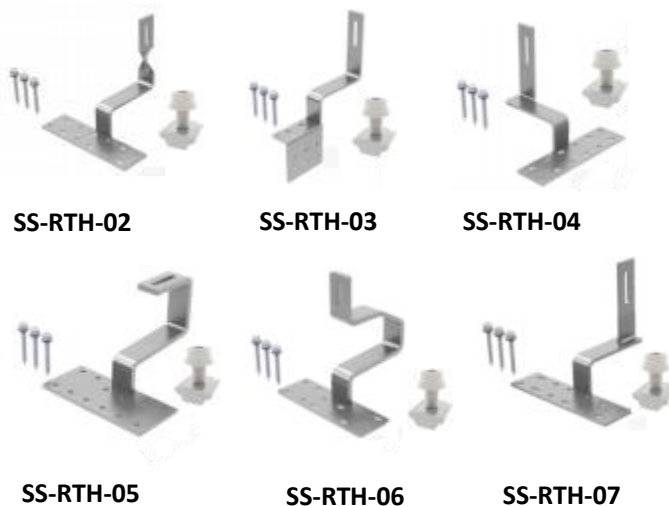


### SUS Tile Hook

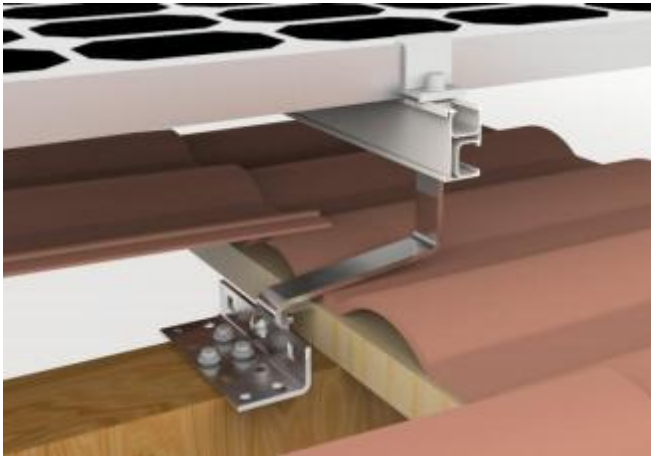


AA-RTH-01

### Tile Hook Series



## Adjustable Tile Roof Mount



Adjustable Tile Hook can be adjusted horizontally and vertically, which extend the chance where regular tile hook can't be used.

### Features

1. Accommodate different types of PV solar panels
2. Custom-made tile hooks based on tile specifications
3. Made of SUS 304
4. Easy and fast installation
5. No need to drill into tile
6. Slotted for easy adjustment

### Component List

Components	Quantity
A. Stainless Steel 304 hook	1
B. 6.3x65mm woodscrew & EPDM washer	3
C. M8x25mm SUS 304 bolt & rail nut & SUS washer	1
D. M10x 25mm bolt & hex nut	1



SS-ATH-01

### SGS TEST REPORT

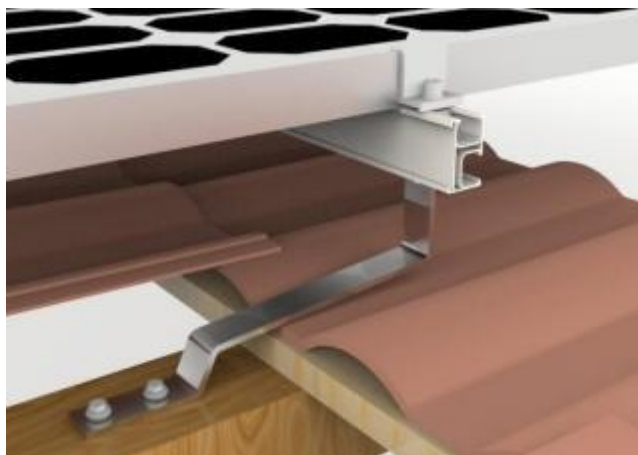


### Adjustable Tile Roof Hook Series





## Flat Tile Roof Mount



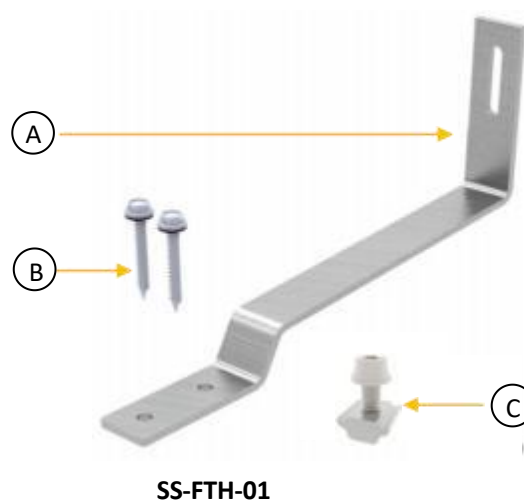
Flat Tile Hook offers the best and easiest solution when install asolar system on cement or flat tile roof.

### Features

1. Accommodate different types of flat tile roofs
2. Made of SUS 304
3. Pre-assembled parts for easy and fast installation
4. No need to drill into tile
5. Slotted for easy adjustment

### Component List

Components	Quantity
A. Stainless Steel 304 hook	1
B. 6.3x65mm woodscrew & EPDM washer	2
C. M8x25mm SUS 304 bolt & rail nut & SUS washer	1



### Shingle Tile Roof Hook Series



SS-STH-01



SS-STH-02



SS-STH-03



SS-STH-04

### Flat Tile Roof Hook Series



SS-FTH-02



SS-FTH-03

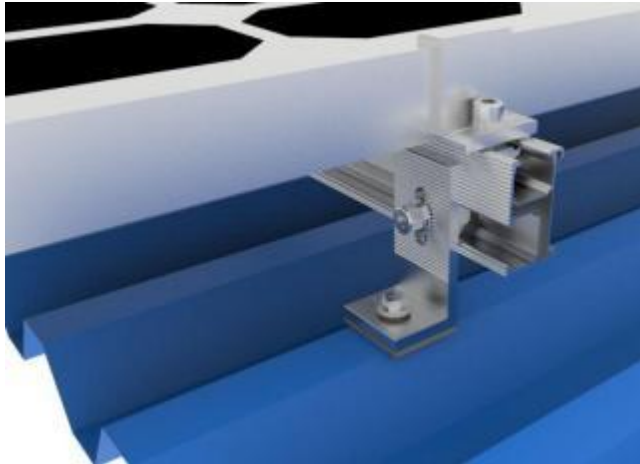


SS-FTH-04



SS-FTH-05

## L Foot Mount



L Foot mount have been widely used on universal corrugated metal sheet roof. It also can fix to the roof rafter directly.

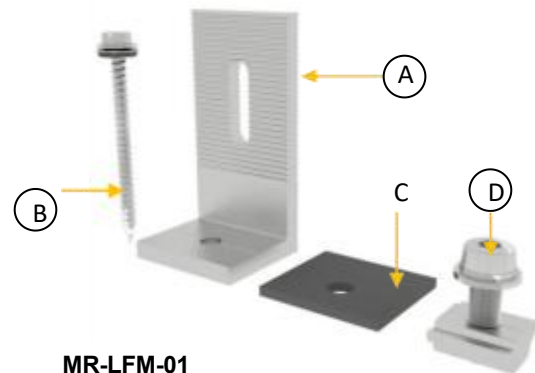
Plus, it can be applied with all kinds of hanger bolt and roof clamps.

### Features

1. Simple and cost-effective installation
2. Material: Aluminum 6005-T5 & SUS 304
3. Waterproof rubber gasket integrated
4. Apply for many kinds of metal roof

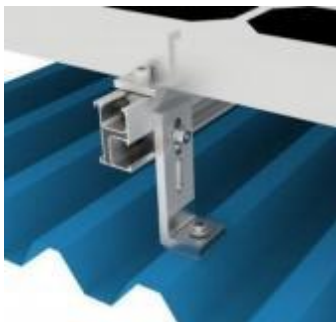
### Components List

Components	Quantity
A. L Foot Mount	1
B. M6.3x80mm woodscrew	1
C. Rubber Gasket	1
D. M8X25 SUS 304 bolt& rail nut & SUS washer	1



MR-LFM-01

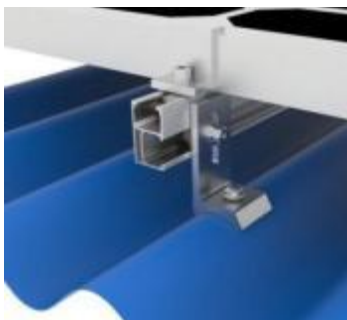
### Specification



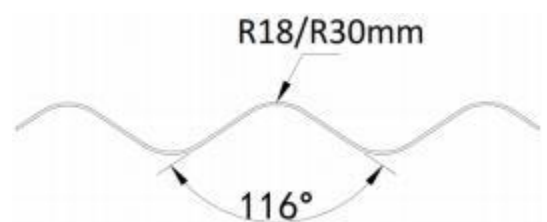
MR-LFM-02



MR-LFM-03



MR-LFM-04



## Hanger Bolt Mount



MR-HB

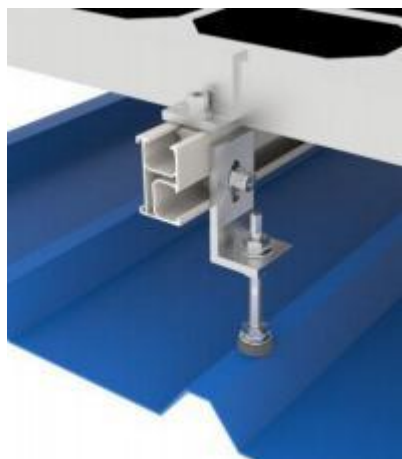
MR-HB-S

Hanger Bolt apply to install on both wooden rafter and steel purlin. Both types can be applied with L Foot and plate. There are three sizes most common use, M10x200mm, M12x200mm and M12x300mm Hanger bolt.

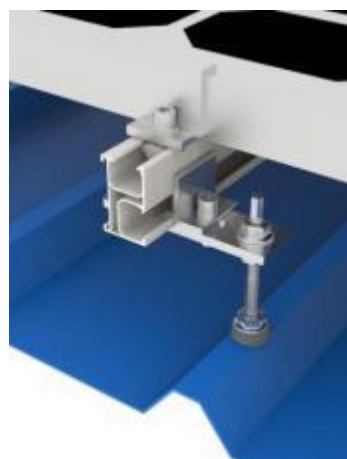
### Features

1. Fast and simple installation
2. Made of SUS 304
3. Highly corrosion resistant surface treatment
4. Waterproof EPDM rubber integrated
5. Wooden rafter and steel purlin options

## Hanger Bolt Mount Series



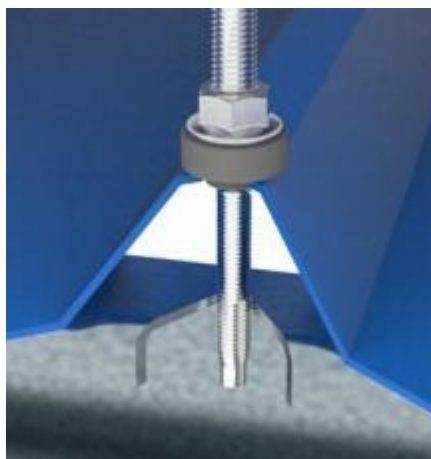
MR-HB-01



MR-HB-02



## Application



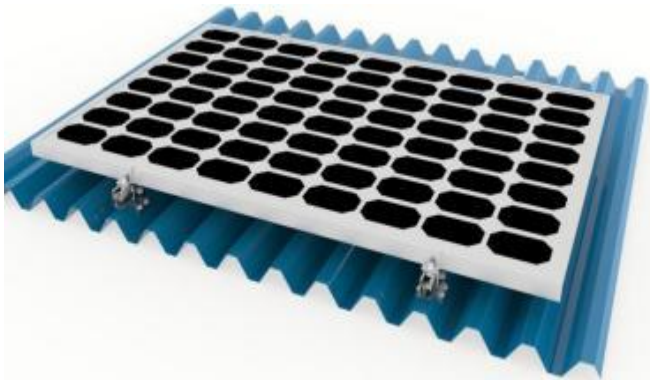
MR-HB-S-01



## Trapezoidal Metal Roof Clamps

### Technical Information

- Material: AL6005-T5 & EPDM
- Application: Trapezoidal Metal Roof
- Fixed Way: Using self-tapping screw to fix the clamps on the roof
- Custom made available for different metal roof



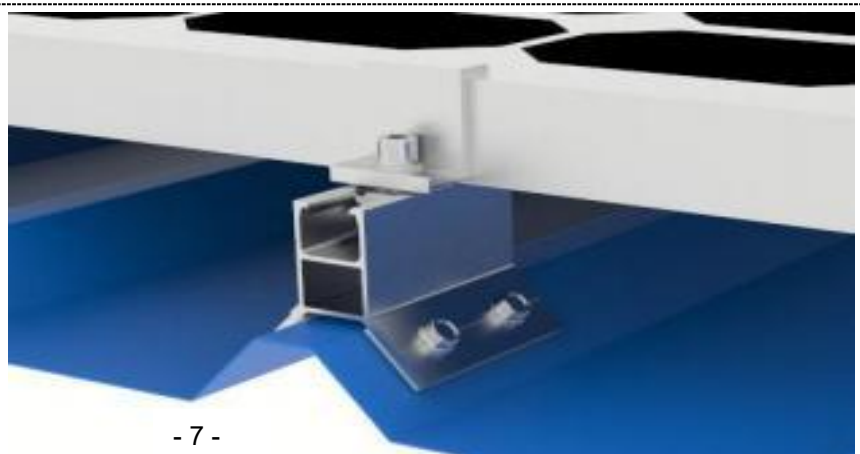
AL-MRC-02



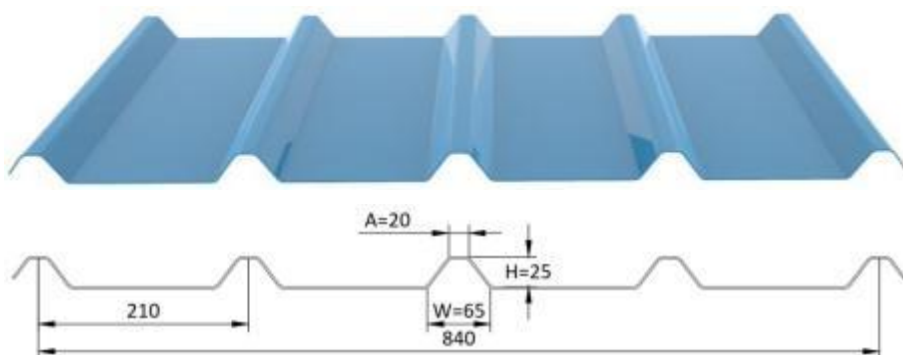
### Horizontal & Rail-less Solution



AL-MRC-03

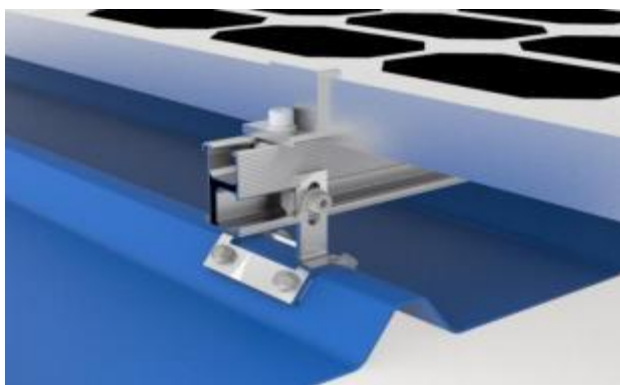


## Trapezoidal Metal Roof Clamps



### Technical Information

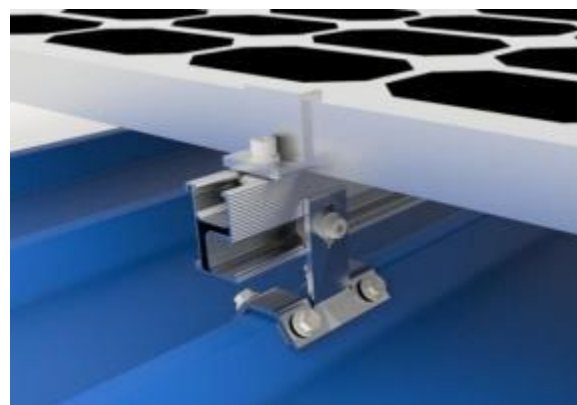
- Material: SUS304 & EPDM
- Application: Trapezoidal Metal Roof
- Fixed Way: Using self-tapping screw to fix the clamps on the roof



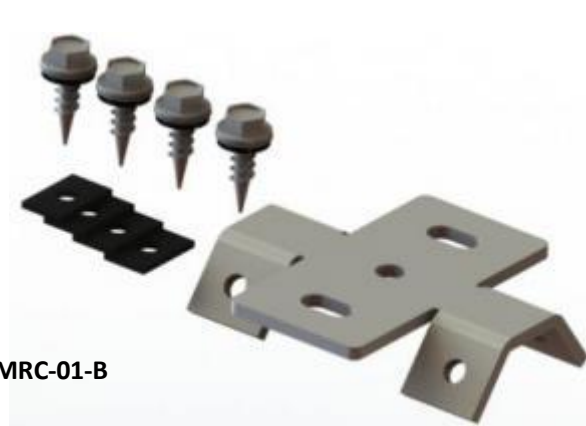
SS-MRC-01



SS-MRC-01-A



SS-MRC-01-B



# Universal Metal Roof Clamp

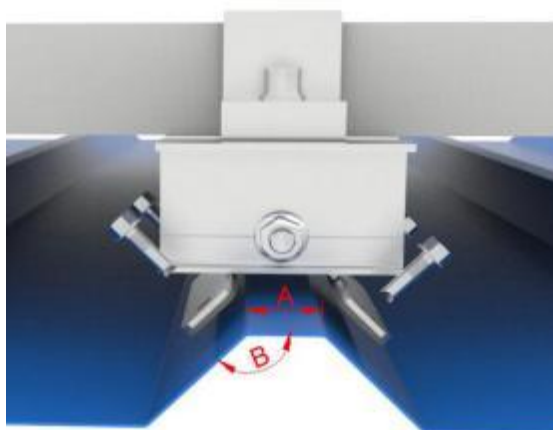
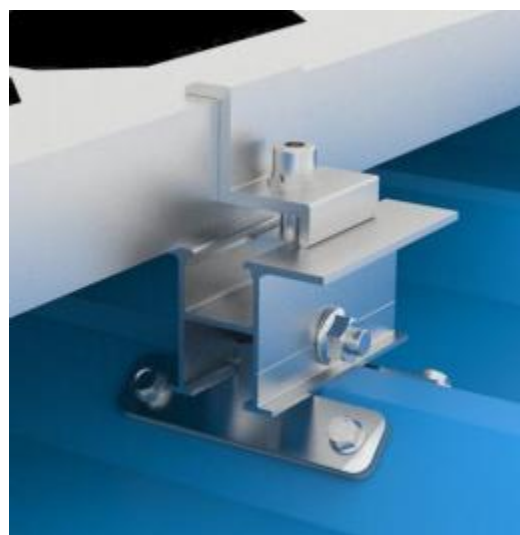


Universal Roof Clamp can work with all kinds of trapezoidal metal roof. It is a rail-less solution, it will help you save some cost and labor cost. Use anti-aging EPDM rubber to improve the waterproof performance. The material of this product is made by aluminum alloy (AL 6005-T5) and stainless steel 304 (SUS 304), which has strong corrosion resistance.



**UM-RC**

Universal Roof Clamp

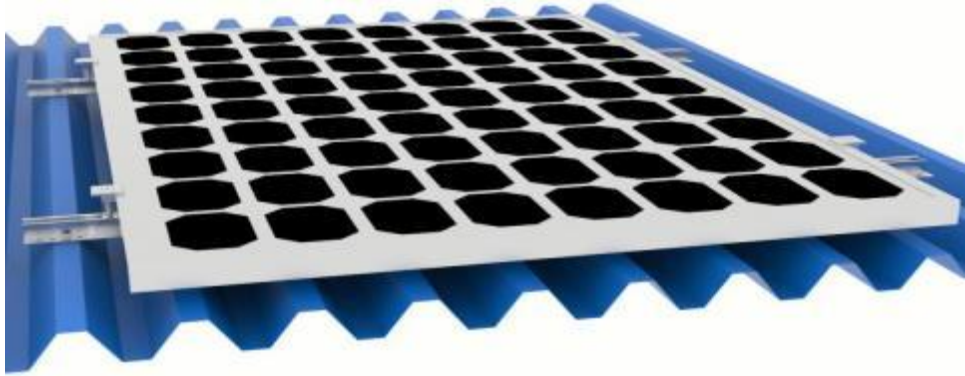


**Metal Roof Sheet Specification**

	Min.	Max.
A	20 mm	60 mm
B	90 degree	140 degree



# Universal Metal Roof Clamp

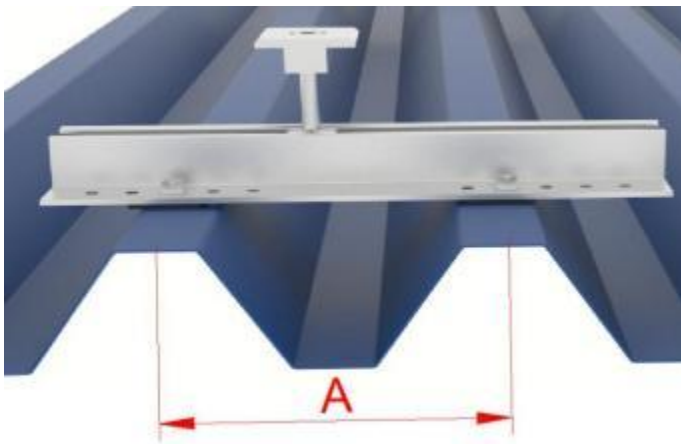
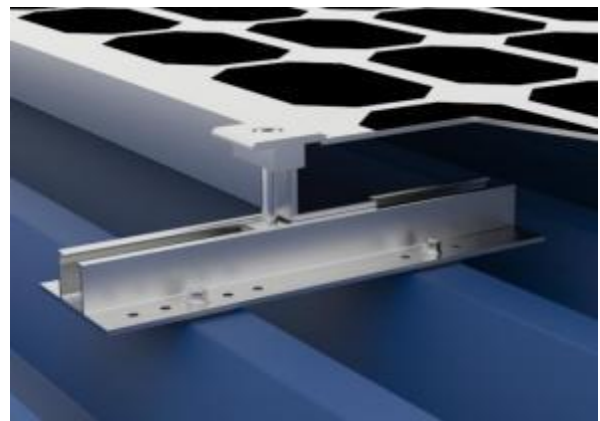


This type mini rail can work with all kinds of trapezoidal metal roof. It was made by aluminum alloy, which has strong anti-corrosion. For this solution, it can save at least 80% cost and 50% installation time.

---



**AL-MRC-04**  
Vertical & Rail-less Solution



## Metal Roof Sheet Specification

	Min.	Max.
A	80 mm	220 mm



## Features:

1. Adjustable tilt angle per different request;
2. Highly pre-assembled parts on factory can save installation time onsite and labor cost;
3. Simple and fast installation;
4. Hardware included;
5. Customized request can accept.

## Technical information

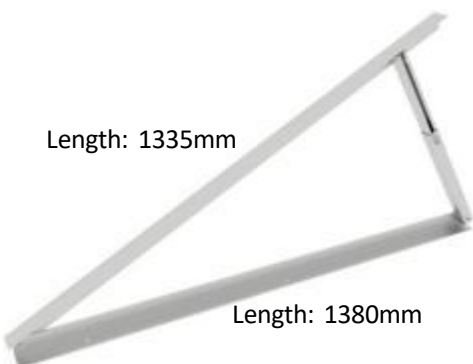
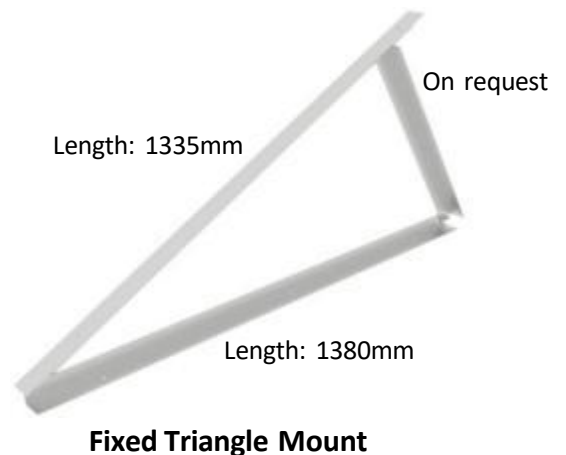
Application: Commercial & residential area

Max Wind Speed: 60m/s

Material: Aluminum 6005-T5

### Fixed Triangle Mount

Item No.	Description	Length of Back Tilt
FT-RM-15	Fixed Triangle Mount, Tilt angle 15°	405mm
FT-RM-20	Fixed Triangle Mount, Tilt angle 20°	505mm
FT-RM-30	Fixed Triangle Mount, Tilt angle 30°	705mm



### Adjustable Triangle Mount

### Adjustable Triangle Mount







Item No.	Description	Adjustable Angle Range
AT-RM-10/15	Adjustable Triangle Mount, 10/15°	10~15°
AT-RM-15/30	Adjustable Triangle Mount, 15/30°	15~30°



## Introduction

Flat Roof Mount System II is suitable for flat roof and tilt roof. Fixed angle and adjustable angle are both acceptable, you can choose one way to install, it will improve the applicability. This system will not damage the roof waterproof structure. Products are fully used aluminum alloy AL6005-T5 and stainless steel 304, it makes products has strongly corrosion resistance. The components are pre-assembled in factory, it makes installation easy and quick to save your cost and time.

## Technical Information:

-  Installation Site: Flat Roof or Pitched Roof
-  Max Wind Speed: <60m / s
-  Max Snow Load: <1.4 KN / M2
-  Fixed Angle: 5° ~ 60°
-  Adjustable Angle : 5° ~ 15°, 15° ~ 30°, 30° ~ 60°
-  Anti-corrosion: Anodized Aluminum 6005-T5 & Stainless Steel 304
-  Warranties: 12 years warranties & 20 years service life

## Components List



## Pre-assembled Part Installation



## Foundation Type



Rail-less & Ballast Foundation



Ballast Foundation



Concrete Block Foundation





## Technical Information:

-  Installation Site: Flat Roof
-  Module Orientation: Landscape
-  Material: Aluminum 6005-T5
-  Max Wind Speed: <60m/s
-  Max Snow Load: <1.4 KN/M<sup>2</sup>
-  Tilt Angle: 5° ~ 30°
-  Warranties: 12 Years

## Features & Benefits

- a) Non-Penetrating toroof
- b) Pre-assembled parts for simple and fast installation
- c) Minimize roof space limitation
- d) Fixed angle or adjustable angle both acceptable
- e) Rail-less
- f) Suitable for all orientations installation
- g) Optimize high power production

## Components List



East-West Flat Roof Mount



Mid Clamp



End Clamp



Ballast Plate

## Components List



## Specification




# Flat Roof Mount System IV (Two Row)



## Features & Benefits

- a) Non-Penetrating toroof
- b) Pre-assembled parts for simple and fast installation
- c) Rail-less
- d) Hardware included
- e) Customized request can be accepted

## Technical Information:

-  Installation Site: Flat Roof
-  Module Orientation: Landscape
-  Material: Aluminum 6005-T5
-  Max Wind Speed: <60 m/s
-  Max Snow Load: <1.4 KN/M2
-  Tilt Angle: 5° ~ 30°
-  Warranties: 12 Years

## Components List



Ballasted Plate



Mid Clamp

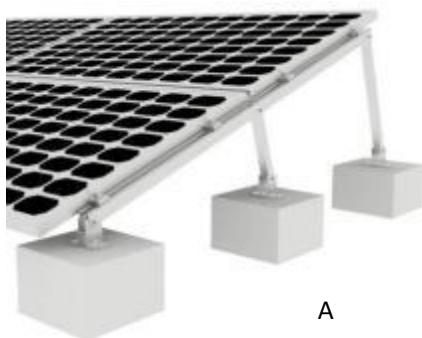


End Clamp

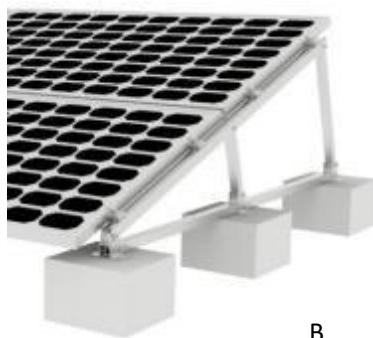


Pre-assembled Flat Roof Mount

## Application Type



A

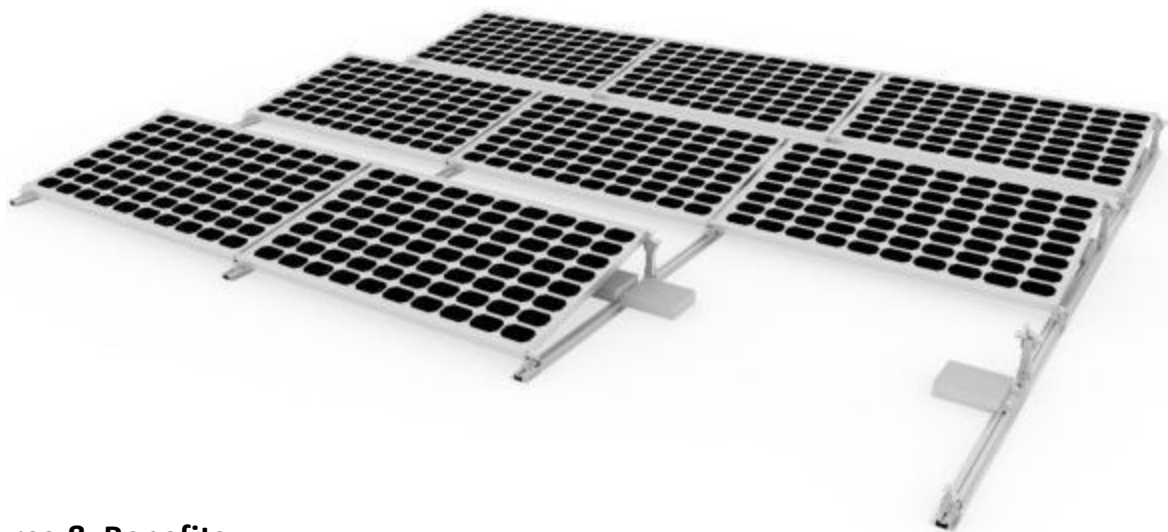


B



C

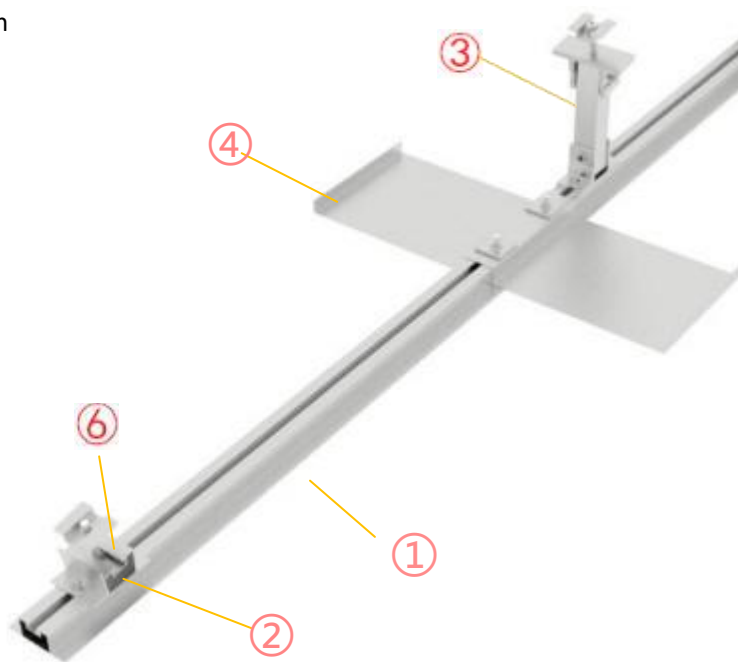
## Aluminum Ballasted Flat Roof Mount



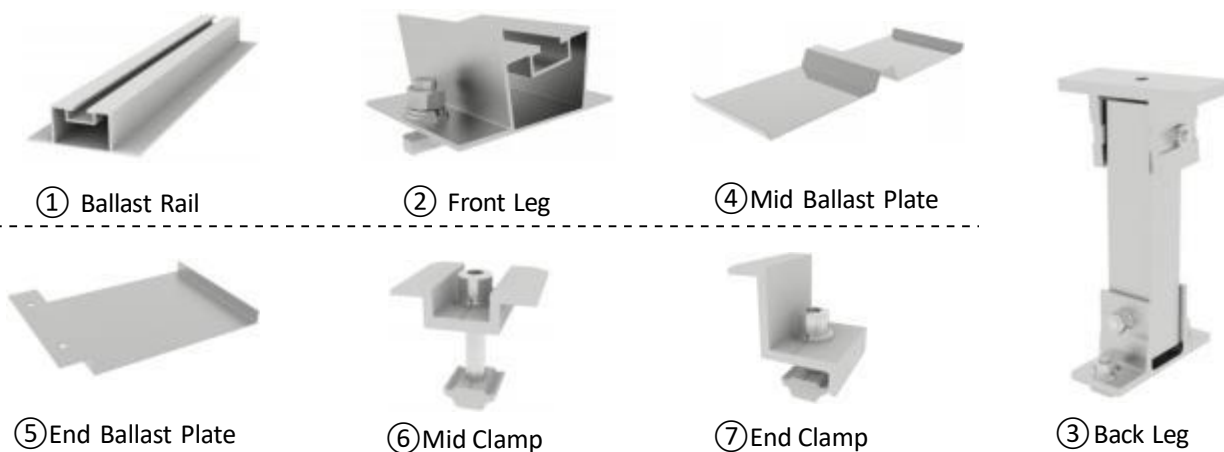
### Features & Benefits

1. Pre-assembled parts for simple and fast installation
2. Non-Penetrating to rafters
3. Easily works around obstacles and uneven terrain
4. Light, sturdy material for a cost-efficient system

Specification	
Tilt Angle	5° 、 10° 、 15°
Max Wind Speed	42m/s
Max Snow load	1.4KN/m <sup>2</sup>
Material	AL6005-T5 & SUS 304

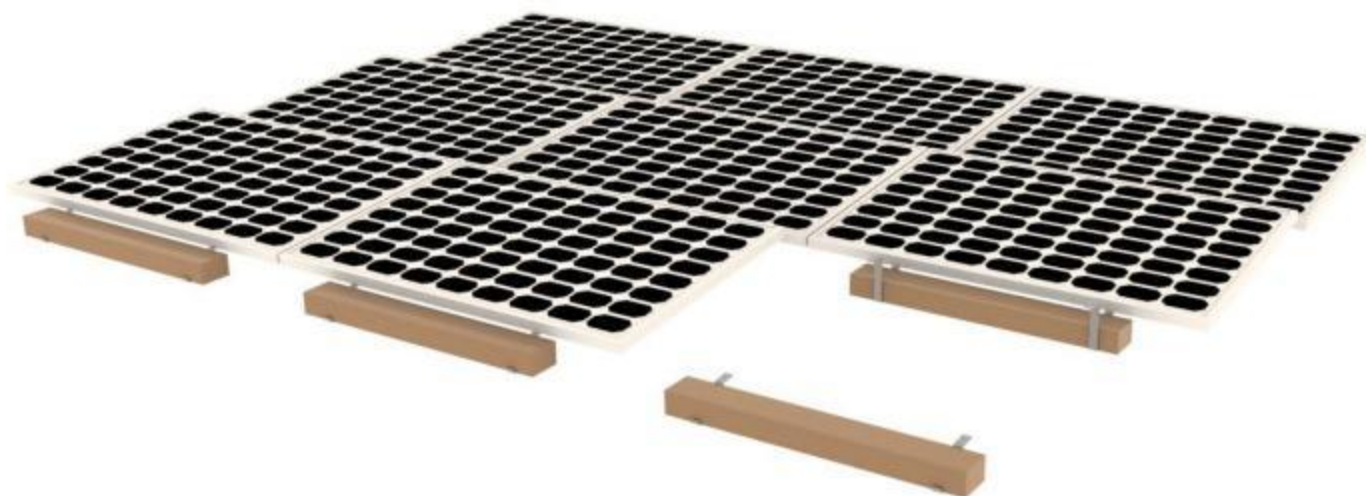


### Components List





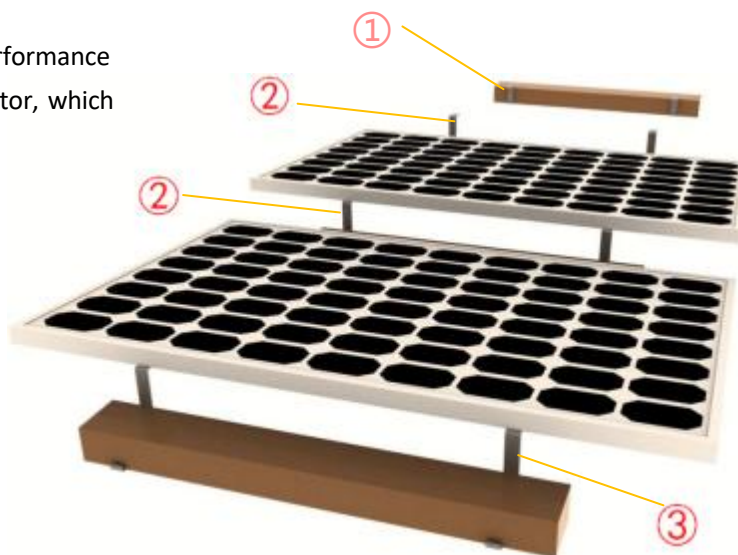
## Stainless Steel Ballasted Flat Roof Mount



### Features & Benefits

1. Few component and easy install
2. Stainless Steel 304 Material, high anti-corrosion performance
3. Using long-span cement block replace wind deflector, which has strong windproof performance and low cost.

Specification	
Tilt Angle	5° 、 10°
Max Wind Speed	42m/s
Max Snow load	1.4KN/m <sup>2</sup>
Material	SUS304



### Components List



① Front Ballast Leg



② Mid Ballast Leg



③ Back Ballast Leg



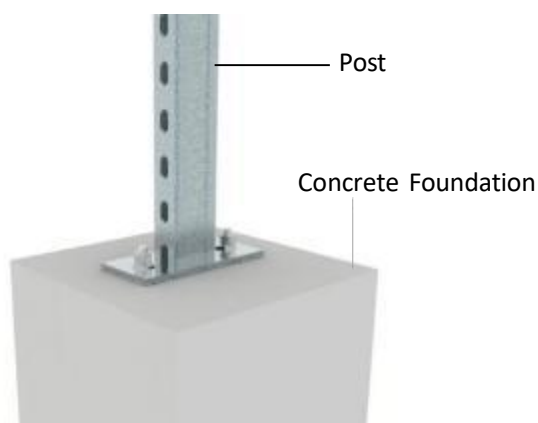
Technical Information	
Tilt Angle	5° ~ 60°
Max Wind Speed	55 m/s
Max Snow Load	1.4KN/m <sup>2</sup>
Material	Galvanized Steel / ZAM (ZM)
Warranty	12 years quality warranty

## Features

1. Suitable for different regions, such as low-cost concretes and high wind and heavy snow regions.
2. Ground screw foundation and concrete foundation can be acceptable
3. Parts have been high pre-assembly on factory to save your installation time
4. Simple and fast installation
5. High quality galvanized steel material

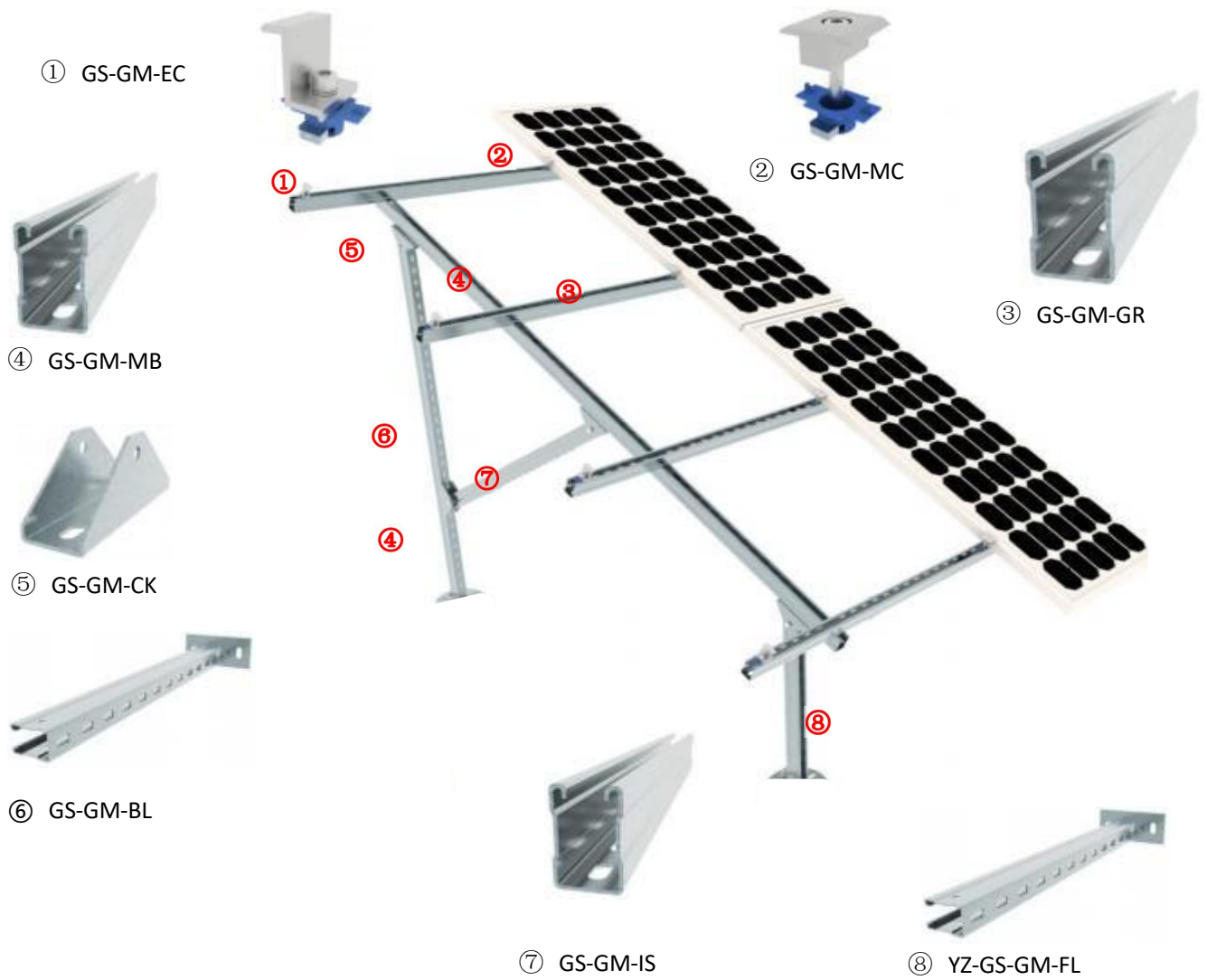


## Foundation Types

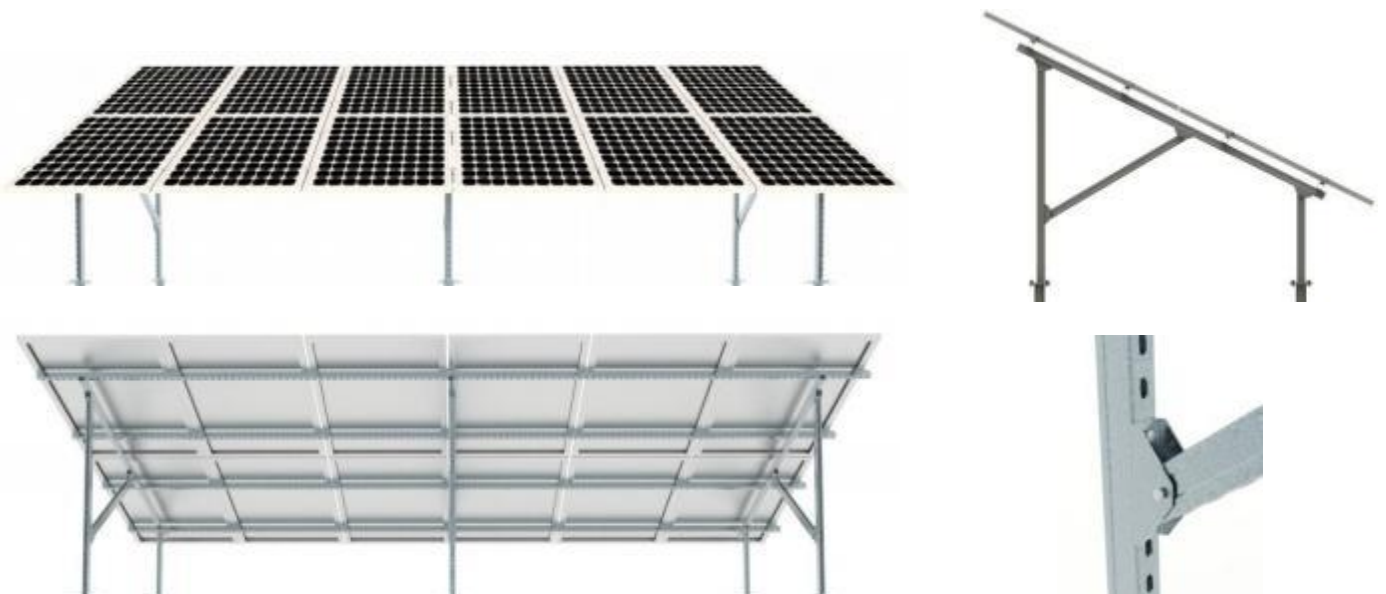


Concrete Foundation

## System Overview



## Side View of Galvanized Steel Mount System







## Features

1. Adjustable tilt angle per different request
2. Highly pre-assembled parts on factory can save installation time onsite and labor cost
3. Simple and fast installation
4. Waterproof EPDM rubber integrated
5. Hardware included
6. Customized request can accept

## Component List



1. Front Leg



Connect to rail



2. Rear Leg



Connect to rail

## Technical Information

Item No.	Description	Length of Rear Leg
AD-FL	Front Leg	~
AD-RL10/15	Rear Leg, adjustable angle 10~15°	240~360mm
AD-RL15/30	Rear Leg, adjustable angle 15~30°	340~680mm
AD-RL30/60	Rear Leg, adjustable angle 30~60°	700~1200mm

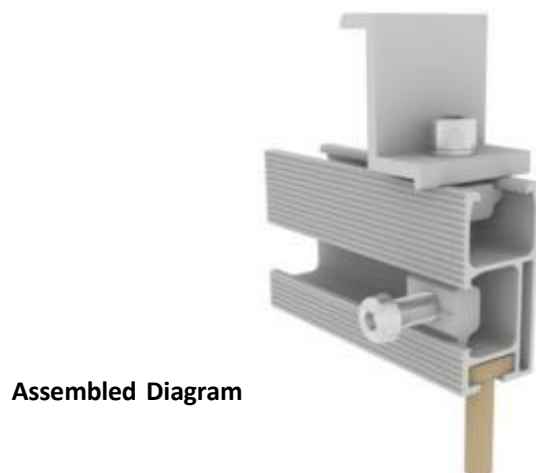
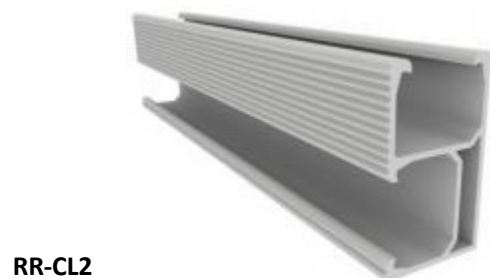
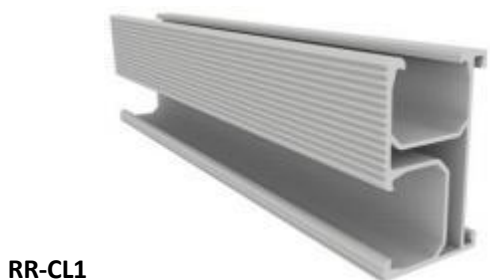
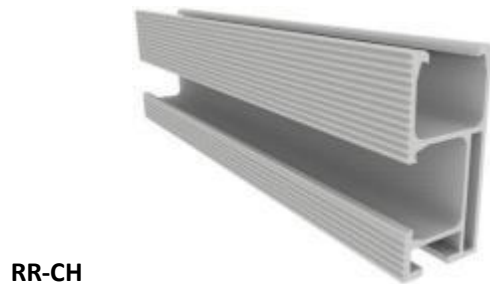
## Rail & Splice for roof

These rails are designed for all kinds of roof type. It comes with high quality, high strength and low cost.

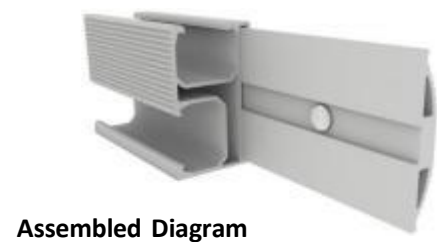
### Features

1. Material: Aluminum 6005-T5
2. Flexibility and compatible
3. Universal

### Roof Rail Series

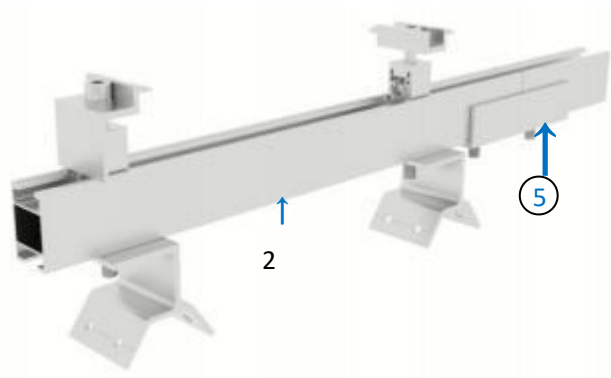
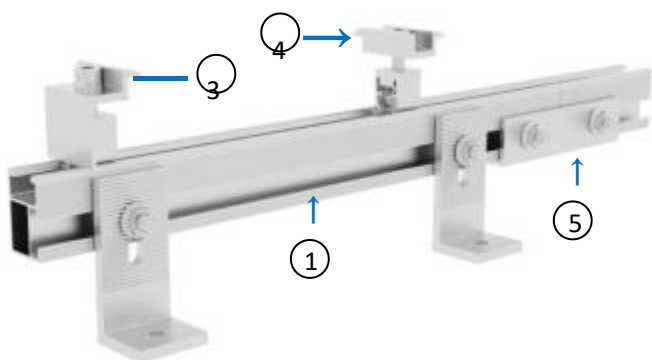


### Rail Connector Series



## Clamps fixed on the side of the rail

## Clamps fixed on the bottom of the rail



Using T bolt to connect the rail with clamps, it is very easy to install and fix firmly.



① RR-CL3



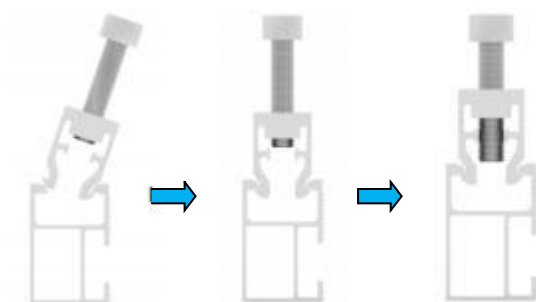
② RR-CL4



③ NEC-F



④ NMC-F



⑤ RRC-CA-03



Using Rail Connector Kit to joint Roof Rail 03#



Using Rail Connector Kit to joint roof Rail 04#

## Mid Clamp & End Clamp

**MC-C Mid Clamp** 30/32  
/35/40/45/50 mm



**EC-C End Clamp**  
30/32/35/40/45/50 mm



**AGM-MC Mid Clamp**  
25/30/35/40/45/46/50 mm



**AGM-EC End Clamp** 25/30/  
35/40/45/46/50 mm



**AMC-C Adjustable Mid Clamp**  
35mm~55 mm



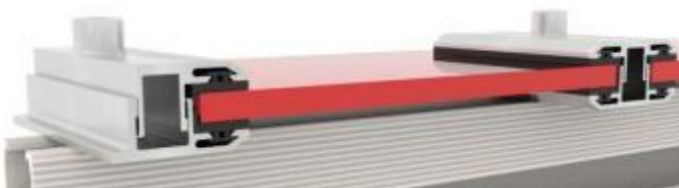
**AEC-B Adjustable End Clamp** 35mm~55 mm



**TF-MC-L80 Thin Film Mid Clamp, 80 mm**  
**TF-MC-L120 Thin Film Mid Clamp, 120 mm**

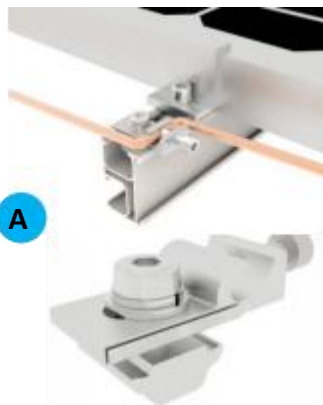


**TF-EC-L80 Thin Film End Clamp, 80 mm**  
**TF-EC-L120 Thin Film End Clamp, 120 mm**

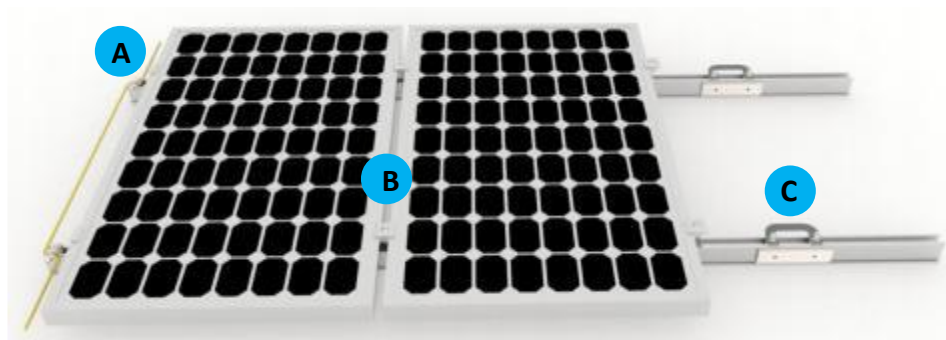




Grounding products can be used to bond solar modules to the aluminum rails and the aluminum rails to ground, so that the entire solar system is grounded and safe; Grounding products include the stainless steel grounding clip, grounding lug and braid copper wire, which are all designed to comply with the requirement of AS5033, UL467 for bonding or grounding systems.



**GS-RGL** Rail Ground Lug



**B**

Grounding Clip

Grounding Clip will penetrate module and rail and create an electrical path through rail.



**C**

**Cable Clip**

Electrically connect spliced Rails



Braided Copper Wire



**GS-CC-01**



**GS-CC-02**



**GS-CC-03**



**GS-CC-04**







